

MerPAS Sampler Deployment

(See back for picture flowchart)

Rev: 012219

MOUNTING:

The *MerPAS* sampler should be placed in a free flowing air location, away from surfaces using the Tekran mounting bracket pictured at right for easy deployment and collection. The bracket has multiple holes for mounting to any surface or support. Alternatively, the *MerPAS* sampler may be mounted to other brackets or supporting structures using the top screw-nut assembly. As a last resort, cable ties may be used, but will need to be checked for integrity over time. Make sure the sampler is mounted so that the opening is pointed face down to prevent rain from entering the sampler.



DEPLOYMENT & SAMPLING START:

The *MerPAS* sampler is shipped in a protective Ziploc bag. The sampler comes with a tape-sealed solid lid that is only removed to initiate sampling. At the end of sampling, the solid lid is secured tightly and resealed with tape. A screened lid is provided for use during deployment. Always use powder-free clean gloves when handling the sampler. To deploy, put on clean gloves and carefully remove the sampler from the bag. Record the sample location and date/time of deployment on the label with a permanent marker. Remove tape and solid lid, then screw the screened lid onto the jar as shown at right - make sure the screen is concave into the jar, not convex pushing out of the jar. Place the solid lid back in the bag and reseal for use at collection. Unscrew the top nut and insert the threaded portion of the *MerPAS* sampler through the single hole of the mounting bracket so the open portion of the jar is face down. Attach nut to the top of the bracket to secure the sampler in place. Finger-tight should be adequate to secure the sampler. Do not use wrenches as this could cause breakage of the plastic mount.



SAMPLING STOP & RETRIEVAL:

To collect the *MerPAS* sampler, first put on new pair of clean gloves. Release the sampler from the mount and unscrew the screened lid. Retrieve the solid white lid and screw it onto jar making sure the lid is good and tight. Seal the lid with tape and record the end date/time on the label with a permanent marker. Put the sampler back in the Ziploc bag and reseal. The sampler is now ready to be returned to the laboratory for analysis of Hg content. If analytical services are needed, Tekran offers analysis of *MerPAS* samplers. Contact Tekran at MerPAS@tekran.com or 416-449-3084 for further details.



DEPLOYMENT & SAMPLING START



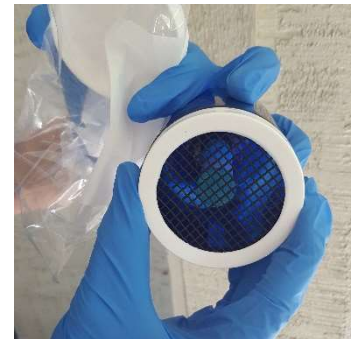
1. Open bag - use gloves!



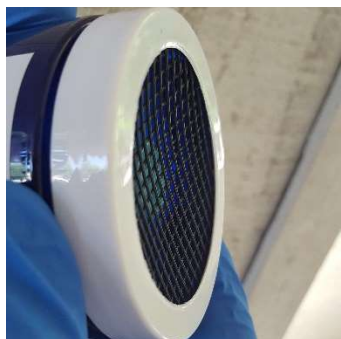
2. Remove tape from lid



3. Remove solid lid & put in bag



4. Attach screened lid to jar



5. Good concave screen shape



6. Bad convex screen shape



7. Label sample with date/time

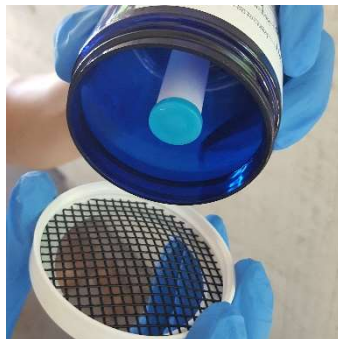


8. Attach jar to bracket

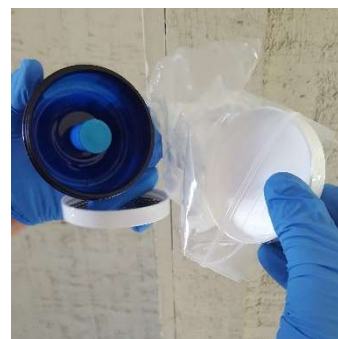
SAMPLING STOP & RETREIVAL



9. To collect, remove top nut



10. Removed screened lid



11. Retrieve solid lid



12. Screw on solid lid TIGHTLY!



13. Seal lid with tape



14. Record sample end time



15. Seal in Bag



16. Ship to lab for analysis